

Chilly Pepper Hire

Model CP90dATA

USER MANUAL



Portable Air Conditioner

PRODUCT SAFETY

- This appliance can be used by children aged from 8 years and above and persons with reduced physical, sensory or mental capabilities or lack of experience and knowledge if they have been given supervision or instruction concerning use of the appliance in a safe way and understand the hazards involved.
- Children shall not play with the appliance.
- Cleaning and user maintenance shall not be made by children without supervision.
- Place the appliance on a firm flat surface. Ensure that the it is kept upright at all times
- Ensure that there is at least 500mm (1.5') between the sides of the appliance and any flammable materials
- Ensure that there is at least 900mm (3') from the top of the appliance and any flammable materials.
- Do not place on soft surfaces.
- Do not cover.
- Do not obstruct the air intakes and exhausts.
- For indoor use only.
- Not suitable for use in boats, caravans or similar locations.
- Do not use in bathrooms, or in wet locations.
- Do not place the mains lead beneath a carpet or rug.
- Do not use the appliance in locations where paint, petrol or other flammable liquids are used or stored.
- Always transport and store in an upright position.
- Do not allow the appliance to fall over when there is water in the base.

IMPORTANT

Installer and Users please note:

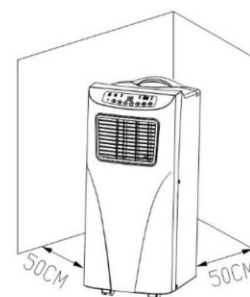
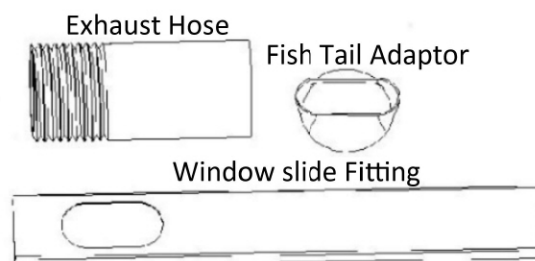
These instructions should be read carefully and left with the user of the product for future reference.

BEFORE USE

Inspect the product including its cable and plug for any signs of damage. If the product is damaged, DO NOT use it, and contact your supplier immediately. The appliance contains a refrigerant gas, so must be kept upright at all times. After unpacking wait 3 hours for the refrigerant gas to stabilize before use.

INSTALLATION

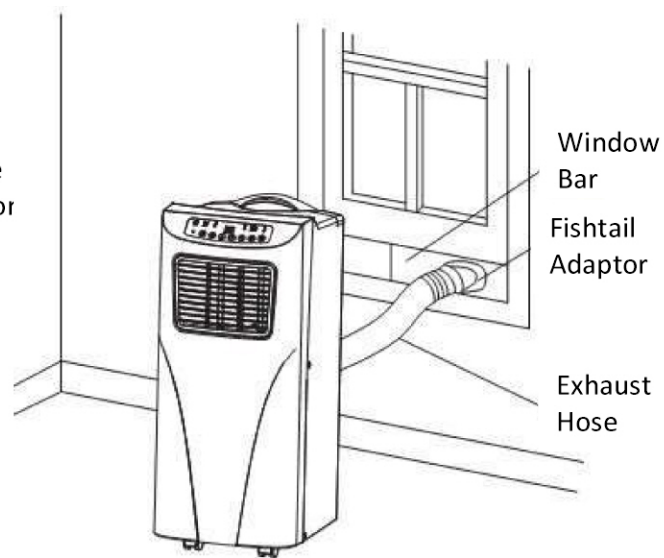
Place the machine on flat and dry surface at least 50cm from walls or other objects.



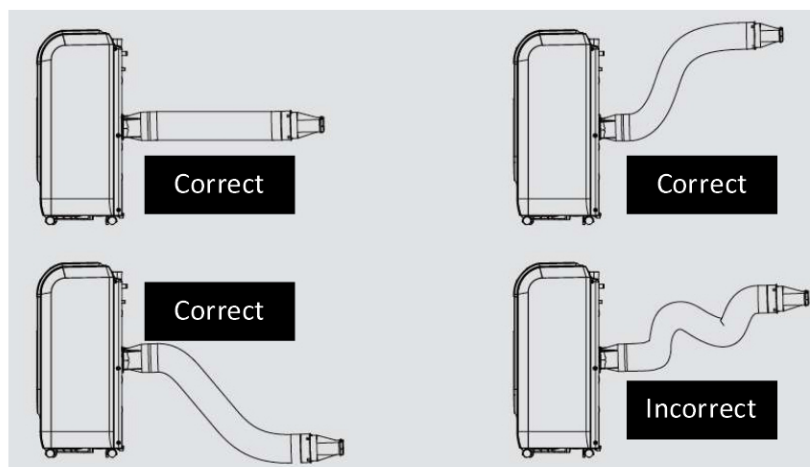
Installing Exhaust Hose

In normal use the unit will produce hot air from the rear exhaust port, this air can be vented through an open window using the supplied vent kit. Connect the exhaust hose as follows, extend the hose slightly and screw into the rear of the unit. Extend the opposite end of the hose slightly and screw on the fishtail adaptor clip the adaptor into the window slide bar.

Seat the window slide adaptor on the window sill and lower the window to the adaptor. The window slide can be adjusted horizontally to fill the width of the window.



The position of the exhaust pipe is very important, sharp bends and kinks should be avoided.

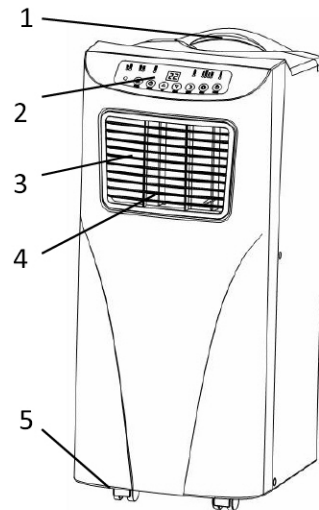


Improper fitting of the exhaust hose can cause the hose to fill with water and prevent the unit from operating correctly. The hose supplied with the unit can extend to 1.5m but the length of exhaust pipe should be kept to the minimum necessary for operation as this will improve efficiency.

PARTS

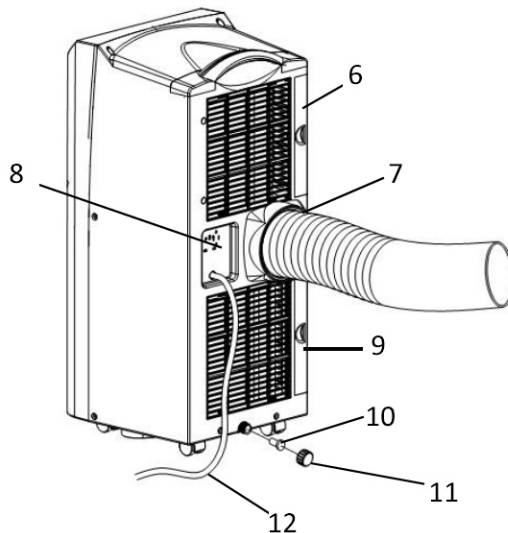
Front

1. Handle
2. Control Panel
3. Air-outlet / Adjustable Louvres
4. Fan blade
5. Castor

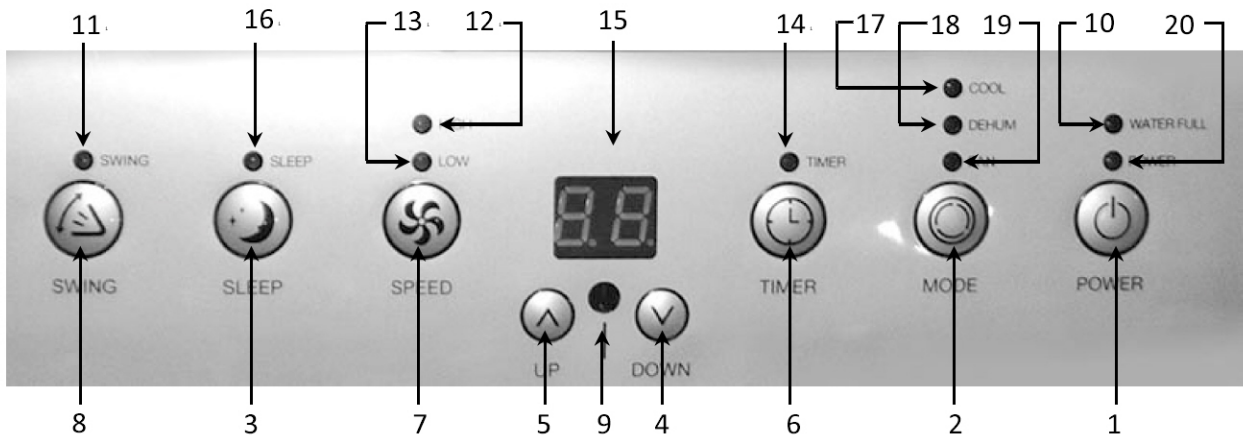


Rear

6. Filter frame upper
7. Exhaust Connector
8. Cable Storage
9. Filter frame lower
10. Rubber Bung
11. Plug Cap
12. Power Cord



CONTROL PANEL

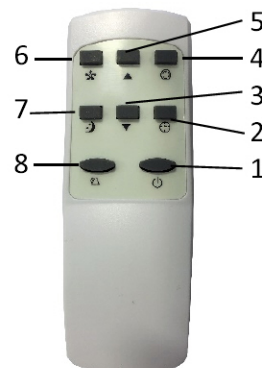


- | | |
|--------------------------------|-------------------------------|
| 1. Power button | 11. Swing indicator |
| 2. Mode button | 12. High fan speed indicator |
| 3. Sleep button | 13. Low fan speed indicator |
| 4. Down button | 14. Timer mode indicator |
| 5. Up button | 15. Display window |
| 6. Timer button | 16. Sleep mode indicator |
| 7. Fan Speed button | 17. Cooling mode indicator |
| 8. Swing button | 18. Dehumidify mode indicator |
| 9. Receiver for remote control | 19. Fan mode indicator |
| 10. "Water Full" indicator | 20. Power indicator |

- 1. POWER:** Press this button to turn the machine on/off. After machine turns on the default mode is cooling with a low fan speed.
- 2. MODE:** After the machine turns on, press this key to select cooling, dehumidifying or fan mode.
- 3. FAN:** In cooling and fan only mode, press this key to select the desired fan speed (high / low).
- 4. DOWN:** Under cooling mode, press this key to reduce the desired temperature (16-31°C).
- 5. UP:** under cooling mode, press this key to increase the desired temperature (16-31°C).
- 6. SLEEP:** Under cooling mode, press this key to turn on/off the sleepfunction.
- 7. TIMER:** Under power-on or standby mode, press this key to setup on/off time from 1-24 hours.
- 8. Swing:** Press to operate the swing louvres, this will oscillate the air from side to side

REMOTE CONTROL

1. Power
2. Timer
3. Temp Down
4. Mode
5. Temp Up
6. Fan Speed
7. Sleep
8. Swing



OPERATION

Cooling mode

- After the machine turns on, the default mode is 'cooling' with the temperature set at 22°C and the fan speed on low.
- Press "MODE" to select cooling mode, the cooling mode indicator light turns on.
- Press "UP" or "DOWN" to adjust the desired temperature (16°C to 31°C).
- Press "FAN" to select high or low fan speed.
- Press "Swing" to oscillate the air from side to side.

Fan mode

- Press "MODE" to select fan mode, fan mode indicator turns on.
- Press "FAN" to select high speed or low speed.
- In this mode Temperature and Sleep function have no effect.

Timer mode

- Under standby mode, press "TIMER" to setup the power-on time. Use the Up/Down buttons to set the number of hours till the unit turns on. The timer indicator turns on.
- Under power-on mode, press "TIMER" to setup power-off timer. Use the Up/Down buttons to set the number of hours till the unit turns off. The timer indicator turns on.

Dehumidifying mode

- Press "MODE" button to select dehumidifying mode, dehumidifying mode indicator turns on.
- Under dehumidifying mode, sleep function cannot be setup and the fan speed is set to low.

Sleeping mode

- Press the "SLEEP" button to enter sleep mode, the default value of the fan speed is low.
- When sleep mode is on and the unit is in cooling mode, after one hour the set temperature will go up 1°C, after the second hour the set temperature will go up another 1°C and then continue at this temperature.
- The sleep function is disabled in dehumidifying and fan modes. If the water full indicator lights, the machine is put in standby or the mode is changed the sleep mode will be cancelled.

Compressor protection

- To protect the unit from unnecessary wear the compressor will only turn on three minutes after power on or restart and it will continue to run for 3 minutes after power off. DO NOT unplug the unit till the compressor has stopped.

Water Drainage

This air conditioner has an auto-water-evaporating system. Condensed-water is transferred to the hot exhaust air and vented through the hose. This will not only improve cooling efficiency, but also save energy.

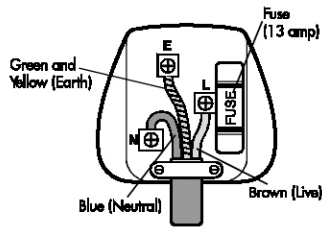
If inner water tank does become full, "W.F." will flash on the display and the Water Full LED will illuminate. At the same time the machine will enter standby mode and a buzzer will be heard. The compressor will stop and no keys can be pressed on the display until the internal tank has been emptied.

To empty the water tank, switch the unit off by pressing the Power button, wait for three minutes then disconnect from the mains supply. Place a drainage pan underneath the drain pipe (at the bottom, rear of the unit in the center). Remove the drain cap and withdraw the bung, allow the water to drain into the drainage pan. Replace the bung and cap then reconnect the unit to the mains supply.

In very humid environments it is possible the tank may fill more frequently, under these circumstances it may be easier to fit a continuous drain. To do this attach a suitable pipe to the drain port and run to drain.

MAINTENANCE

If the mains lead is damaged, it must be replaced by the manufacturer or an authorized service center. If the mains plug needs to be replaced, proceed as follows:



Connect the brown wire to the terminal labelled "L".

Connect the blue wire to the terminal labelled "N".

Connect the green/yellow wire to the terminal labelled with the earth symbol or "E".

Make sure that the cord-grip is positioned correctly (over the outer sheath of the cable) and is fully tightened.

OPERATING COSTS

At time of going to press, the average cost of electricity is £0.12 per unit (kilowatt-hour). The amount you are being charged will be shown on your electricity bill.

At this cost, the unit will cost £0.10 per hour to run in heating, cooling or dehumidifying modes, and £0.02 per hour to run in the fan-only mode.

To minimise the power used (and reduce operating costs):

Make sure that the filter is kept clean.

Make sure that the air intakes and exhausts are not obstructed.

Keep doors and windows closed to prevent conditioned air from escaping, and to prevent exhaust air from re-entering the room.

Use blinds to prevent direct sunlight reaching the room.

Set the temperature higher whilst cooling.

DISPOSAL AND RECYCLING

You must not dispose of this appliance with domestic household waste.

Most local authorities have a specific collection system for appliances and disposal is free of charge to the end-user.

When replacing an existing appliance with a similar new appliance your retailer may take the old appliance for disposal.

This air conditioner contains R410a refrigerant gas. At the end of its life the disposal of this product must be in accordance with local regulations.

PAT TESTING.

When used in an office environment we recommend that this product should be safety-tested yearly by a qualified electrician (PAT Tested). We recommend that it is PAT tested regularly when used in a domestic environment

CLEANING

The unit should be cleaned regularly to maintain the best possible operating efficiency and performance.

Before any maintenance should be performed turn off the unit and once the fans and compressors have stopped unplug the unit from the mains supply and leave for 3 minutes.

- Use a soft semi-dry cloth to clean the machine. Do not use chemical agents, such as benzene, alcohol or gasoline etc.; the use of such cleaning agents may damage the machine surface or even the machine itself.
- Do not spill water into the machine.

Filters

- Clean the filters every two weeks. Blocking the filters with excessive dust or dirt will reduce the efficiency and effectiveness of the air conditioner.
- Clean the filters in warm water with a mild detergent, then leave cleaned filters to dry. Do not replace filters until they are completely dry.
- **Note:** Do not run the machine without filters.

Seasonal Cleaning & Storage

- If the machine is not to be used for a prolonged period, please follow the instructions below:
- Empty the condensate tank by placing a drainage pan underneath the drain pipe (at the bottom, rear of the unit in the center). Remove the drain cap and withdraw the bung, allow the water to drain into the drainage pan. Replace the bung and cap.
- Let the machine run under fan only mode for 2 hours to dry out the internal machine parts.
- Turn off machine and unplug from the mains supply.
- Clean and dry the filters, then reinstall them.
- Unscrew the exhaust pipe and store in a safe place.
- Cover the machine (a clean bin bag will do the job), and store in a dry place.

TROUBLE SHOOTING

Please see the following trouble shooting guide. This is by no means a comprehensive list of possible faults but should cover most situations. If you have tried all the solutions below and the unit still does not work, then contact a qualified service engineer. These units contain refrigerant gases which if released can damage the environment, do not attempt to repair or service this unit yourself. All servicing should be referred to a qualified air conditioning engineer.

Problem	Possible Cause	Solution
Machine will not work	Power off	Power on
	Water-full indicator turns on	Drain water out
Machine auto-restarts frequently	Unit in Direct sunlight	Draw the curtains
	Doors and windows are open, too many heat sources in the room.	Close the door and windows, remove heat sources.
	Filters are dirty.	Clean or replace filters
	Air-inlet or air out-let is blocked	Remove blockage
Too noisy	Machine is not on flat a level surface.	Place it on flat and solid ground
Compressor does not work	Compressor time-delay protection is on	Wait for 3 minutes, then restart the machine.

TECHNICAL SPECIFICATION

		Unit	Value
Cooling Capacity		Btu/h	9000
		W	2630
Power Supply		V	230~
Rated Input (Cooling)		W	990
Rated Current (Cooling)		A	4.3
EER for Cooling (Energy Rating)		W/W	2.6 (A)
Moisture Removal		L/h	1
Air Circulation		m ³ /h	380
Noise		dB(A)	65
Product Size	H×W×D	mm	730x320x320
Refrigerant		Type/Charge	R410a/500g
Net Weight		Kg	21

SERVICE WARRANTY

Chilly Pepper Hire guarantees the product free from defects in materials and workmanship for a period of twelve months.

Should this appliance be operated under conditions other than those recommended, at voltages other than the voltage indicated on the appliance, or any attempts are made to service or modify the appliance, then the warranty will be rendered void.

The product you buy may sometimes differ slightly from illustrations. This warranty is in addition to, and does not affect, your statutory rights.

If your product arrives damaged, you must contact Chilly Pepper Hire, who will arrange replacement.

If your product fails within the guarantee period, firstly read the "Troubleshooting" section of this manual, because temperature and weather conditions can affect the performance of certain products. If the product needs to be repaired or replaced, you must contact the retailer from whom you bought it.

If you have just received your product and require technical help in using it, please call our Help Desk on 020 8844 1665.

If you have any other technical queries about the product, please call our Help Desk on 020 8844 1665.

Chilly Pepper Hire

Chilly Pepper House,
Unit 6, Southwood Manor Farm
Hersham, Surrey KT124BJ
020 8844 1665
sales@chillypepperhire.co.uk
www.chillypepperhire.co.uk