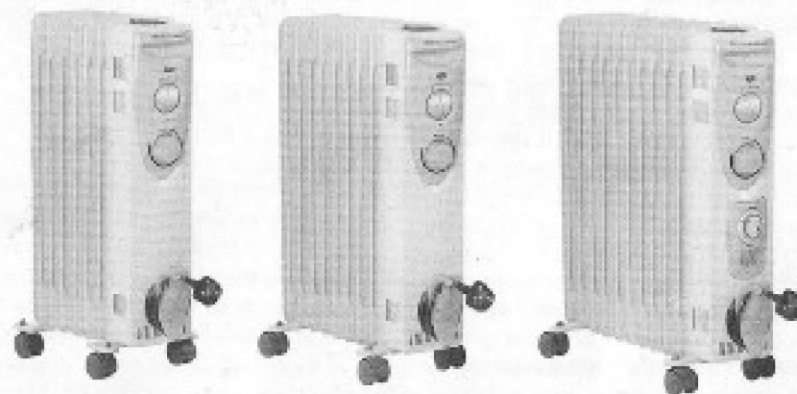


OIL FILLED RADIATOR
MODEL C307, C309 & C3011T



C307

C309

C3011T

**Please read this instruction manual before operating and
keep safe for future reference**

A. IMPORTANT SAFETY INSTRUCTIONS

PLEASE READ ALL INSTRUCTIONS CAREFULLY BEFORE USING THIS PRODUCT.

Use this heater only as described in this manual. Any other use not recommended by the manufacturer may cause a fire or electrical shock.

When using electrical appliances, basic safety precautions should always be followed:

1. Before operating the heater remove the unit from its packaging and check it is in good condition.
2. The surfaces of this heater are hot whilst in operation. Always allow a cool down period before moving it to another location. Keep all flammable materials well away from the heater.
3. Extreme caution is necessary when any heater is used by or near children or pets and whenever the heater is left operating and unattended.
4. Always unplug heater when not in use.
5. Do not operate any heater with a damaged cord or plug, after the heater malfunctions, has been dropped or damaged in any manner. Return the heater to an authorised service facility for examination and repair.
6. Do not use outdoors. It is not intended for use in wet or damp locations. Never locate heater where it may fall into a bathtub or other water container.
7. Do not run cord under carpeting. Do not cover cord with rugs or runners. Arrange cord away from an area where it may be tripped over. Do not use this heater with a programmer, timer or any other device that switches the heater on automatically, since a fire risk exists if the heater is covered or positioned incorrectly.
8. To disconnect heater, turn switches to the off position and remove plug from the power socket. Pull only by the plug. Never pull on the cord.
9. Do not place the heater on soft surfaces. Always place on a flat level surface.
10. Do not use it in areas where petrol, paint, or flammable liquids are used or stored.
11. Do not let children play with the packaging, for example plastic bags.
12. Check household voltage to ensure it matches the rating plate specification.
13. Avoid the use of an extension cord as it could overheat and cause a fire.
14. This heater is filled with a precise quantity of special oil. Repairs requiring the opening of the oil container are only to be made by the manufacturer or a qualified service engineer, who should be contacted if there is any leakage.

READ & SAVE THESE IMPORTANT INSTRUCTIONS

B. BS PLUG WIRING

Wiring Instructions: Should it be necessary to change the plug please note the wires in the mains lead are coloured in accordance with the following code:

BLUE - NEUTRAL
BROWN - LIVE
GREEN AND YELLOW - EARTH

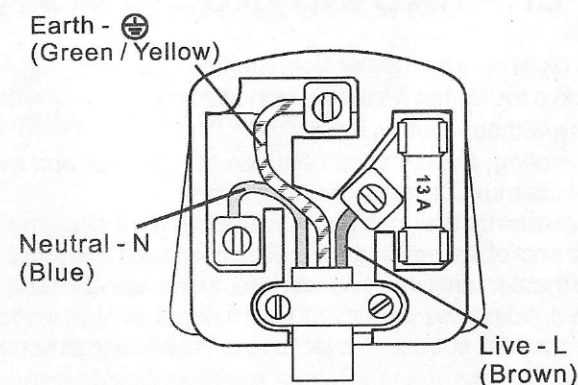
As the colours of the wires in the mains lead of this appliance may not correspond with the coloured markings identifying the terminals in your plug, proceed as follows:

1. The **BLUE** wire is the **NEUTRAL** and must be connected to the terminal which is marked with the letter **N** or coloured **BLACK**.
2. The **BROWN** wire is the **LIVE** and must be connected to the terminal which is marked with the letter **L** or coloured **RED**.
3. The **GREEN/YELLOW** is the **EARTH** and must be connected to the terminal which is marked with the letter **E** or \oplus or coloured **GREEN OR GREEN/YELLOW**.
4. Always ensure that the cord grip is positioned and fastened correctly.

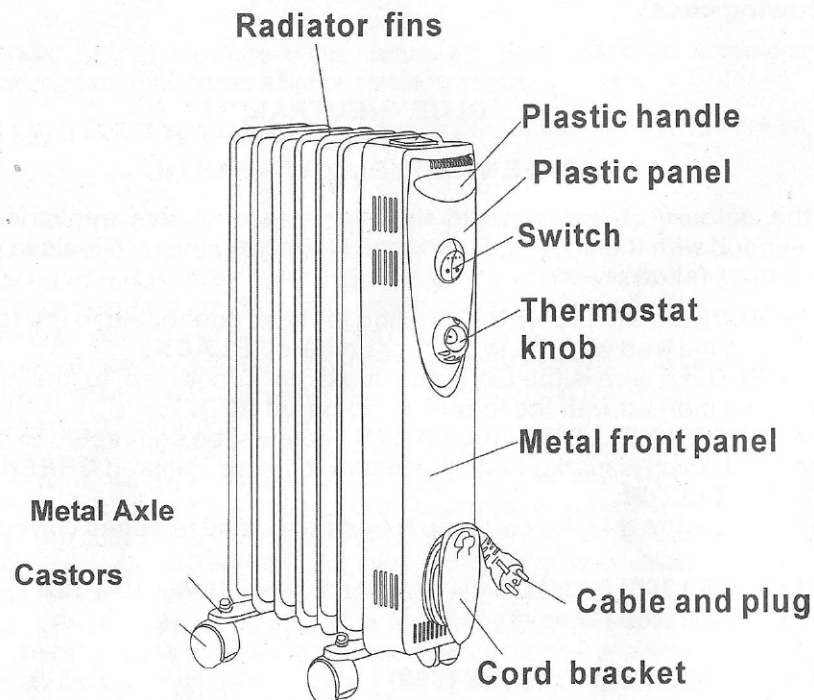
If a **13A (BS 1363)** fused plug is used it must be fitted with a **13A** fuse. If in doubt consult a qualified electrician.

Wiring for a 13 Amp Plug (BS1363)

Please note. The Earth Terminal is marked with the letter **E** or Earth Symbol \oplus



C. PARTS DESCRIPTION



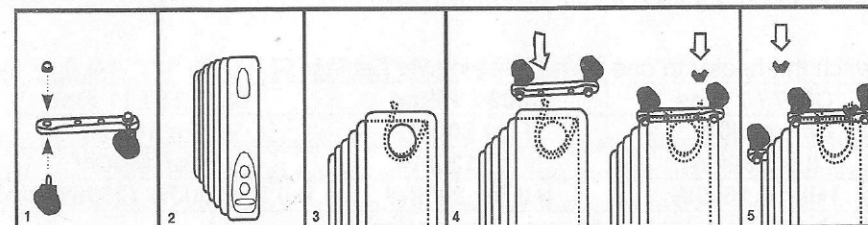
D. PRE-OPERATING INSTRUCTIONS

1. Carefully remove your heater from the box. (please save the carton for off-season storage).
2. Do not use without casters fitted.
3. When operating, the distance between the radiator and the wall and any other objects must be a minimum of 20cm.
4. Make sure the unit is in the off position before plugging the heater into the power socket and unwind the power cord from the cord bracket.
5. Place the heater on a firm level surface in the upright position.
6. Avoid overloading the circuit. Do not use other high wattage appliances in the same power socket. Never use a multi-point adaptor in conjunction with this appliance.

Caution:

- Do not cover or use to dry clothes.
- The surface of this radiator is hot when in operation.

E. CASTOR ASSEMBLY INSTRUCTIONS



Do not operate the heater without the castors attached to the bottom of the unit.

Parts: 4 castors, 2 metal axles, 2 U shaped metal brackets, 4 bolts, 2 wing nuts

1. Fit the castors to the metal axles, by screwing in and securing with the enclosed bolts. The flat side is the top of the axle (fig 1).
2. Turn the radiator upside down and lean against yourself to ensure it does not fall over (fig 2).
3. Fit front U shaped metal bracket onto the back of the front fin, by hooking it over the bottom of the fin (fig 3) and hold in place.
4. Turn one of the metal axles upside down and fit the U shaped metal bracket, which is now on the unit through the holes on the axle (fig 4). One side hooks into place and the other side is threaded. Secure the threaded side in place with one of the wing nuts.
5. Repeat the same assembly instructions to fit the back castors (fig 5).
6. Check all nuts are secured tightly and turn the unit carefully back to its upright position.

F. OPERATING INSTRUCTIONS

Caution: This heater is hot while in operation. It should not be operated unless it is placed in an upright position. Remove all packaging material from the heater.

1. Select an indoor location for the heater away from electrical power cords, curtains and other furnishing. DO not place the heater directly beneath an electrical outlet or against paperboard or low-density fibreboard.
2. Push the power switch to off and turn the thermostat to low before plugging in the radiator.
3. Plug the heater into the power sockets and push the power switch to on.

- There are two indicator light switches, which allow you to set your desired power levels. For example on C309: 'I' is for 800W, 'II' is for 1200W. To set the third power setting, 2000W, press both switches (II & I).

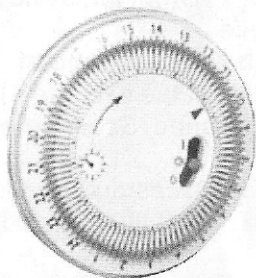
- Switch the heater to one of the three power settings:

C307 / 7 Fins	C309 / 9 Fins	C3011T / 11 Fins
I for 600W	I for 800W	I for 1000W
II for 900W	II for 1200W	II for 1300W
I+II for 1500W	I+II for 2000W	I+II for 2300W (2500W Max)

* Each power switch lights up when activated.

- The operating temperature is selected by adjustment of the thermostat.
- To determine the correct operating temperature for you conditions, when you first switch the unit on set the thermostat to the maximum position. When the unit reaches the required temperature, slowly turn down the thermostat, until the unit switches off. The temperature will now be kept constant. When the temperature falls the unit will come on again.

G. TIMER SETTING (FOR MODEL C3011T ONLY)



- The heater will be always on when the slide switch is in **TIMER** position (I).
- The heater will be always off when the slide switch is in **TIMER** position (0).
- The timer operates when the slide switch is in **TIMER** position (⌚).
- To set the timer, rotate the clock dial clockwise, until the current time is aligned with the indicator arrow at the centre.

When you wish the heater to switch ON, push the corresponding time segment outwards from the centre. Each segment represents around 15 minutes. For example, if you want the heater continuously ON for 2 hours, push 8 segments outwards the centre face.

NOTE: The dial turns **CLOCKWISE ONLY**. Forcing the clock face in the other direction will destroy the timing gear. The timer will stop functioning when unplugged or during a power failure, The correct time must be reset when power is restored.

H. SAFETY OVERHEAT SHUT OFF

A thermal overload protector is built in to prevent overheating. When a potential overheat temperature is reached, the heater will be automatically shut off. It can only resume operation when the user resets the unit.

I. RESET THE HEATER

- Push the Power Switch to the **OFF** position.
- Unplug the heater and wait 5-10 minutes for the unit to cool down.
- Inspect and remove any objects on or adjacent to the heater that may cause high temperature.
- After 5-10 minutes, plug the unit in again and operate normally.

J. CLEANING

Before cleaning turn the heater turn off and unplug from the power supply. To clean use a soft cloth to wipe off any dust. If the heater is very dirty use a damp cloth and wipe dry. Do not use any cleaning detergents, sprays or other chemicals, as they will damage the heater. Store in the original packaging in a ventilated dry area, during off season use.

Caution: Do not allow water to run into the interior of the heater as this could cause a fire or electric shock. **DO NOT** attempt to repair this heater yourself.

K. SPECIFICATIONS

Model	Power	Voltage	N.W. kg	G.W. kg
C307	1500W	230V~ 50Hz	11.00	12.20
C309	2000W	230V~ 50Hz	13.20	14.60
C3011T	2500W Max	230V~ 50Hz	15.40	17.00

* Wattage will vary dependant on voltage

L. SERVICE & WARRANTY

Do not operate the unit with a damaged cord or plug, after the unit malfunctions, or has been dropped or damaged. Return the product to an authorised service facility for examination and repair to avoid a hazard.

For your convenience record the complete model number and product name (located on the Product Identification Plate), the date you purchased the product and your purchase receipt as proof of purchase.

To ensure your product is covered by warranty, the complete faulty product together with your purchase receipt should be returned to your retailer.

ONE (1) YEAR LIMITED WARRANTY **Save This Warranty Information**

Chilly Pepper Hire Guarantees this product free from defects in materials and workmanship for one (1) year.

Should this unit be operated under conditions other than those recommended, at voltages other than the voltage indicated on the unit, or any attempts made to service or modify the unit, will render this WARRANTY VOID. The product you buy may sometimes differ slightly from illustration. This warranty is in addition to, and does not affect, your statutory rights.

Should you have a problem with this product, please call our Help Desk on: 020 8844 1665

This product has been manufactured to comply with EEC Directives 73/23/EEC and 89/336/EEC.

Waste electrical products should not be disposed of with household waste. Please recycle where facilities exist. Check with your Local Authority or retailer for recycling advice.

